



TRACKING SYSTEM

# ISECOM





## ISECOM : TRACKING SYSTEM IN THE CONTEXT OF AN HACCP APPROACH

ISECOM is an HACCP monitoring system used to record, transfer and analyse data from ISECO trolleys.

The recording and transfer of data is performed automatically during trolley operation negating the need for human intervention or trolley downtime.



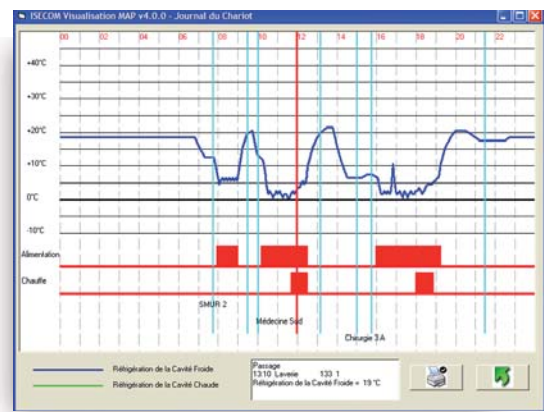
## Recorded data

Data is stored on the trolley's memory board.

ISECOM records the following data :

- ON/OFF plus heating cycle start and finish times and date
- Cavity temperature : every 15 minutes when unplugged, every 5 minutes when plugged
- Heating cycle duration
- Type of end of cycle (normal, manual stop, power line cut off)
- Geographical traceability (requires one or more check-point units)

- Service name (trolley with programmable label option)
- Running up and down times.

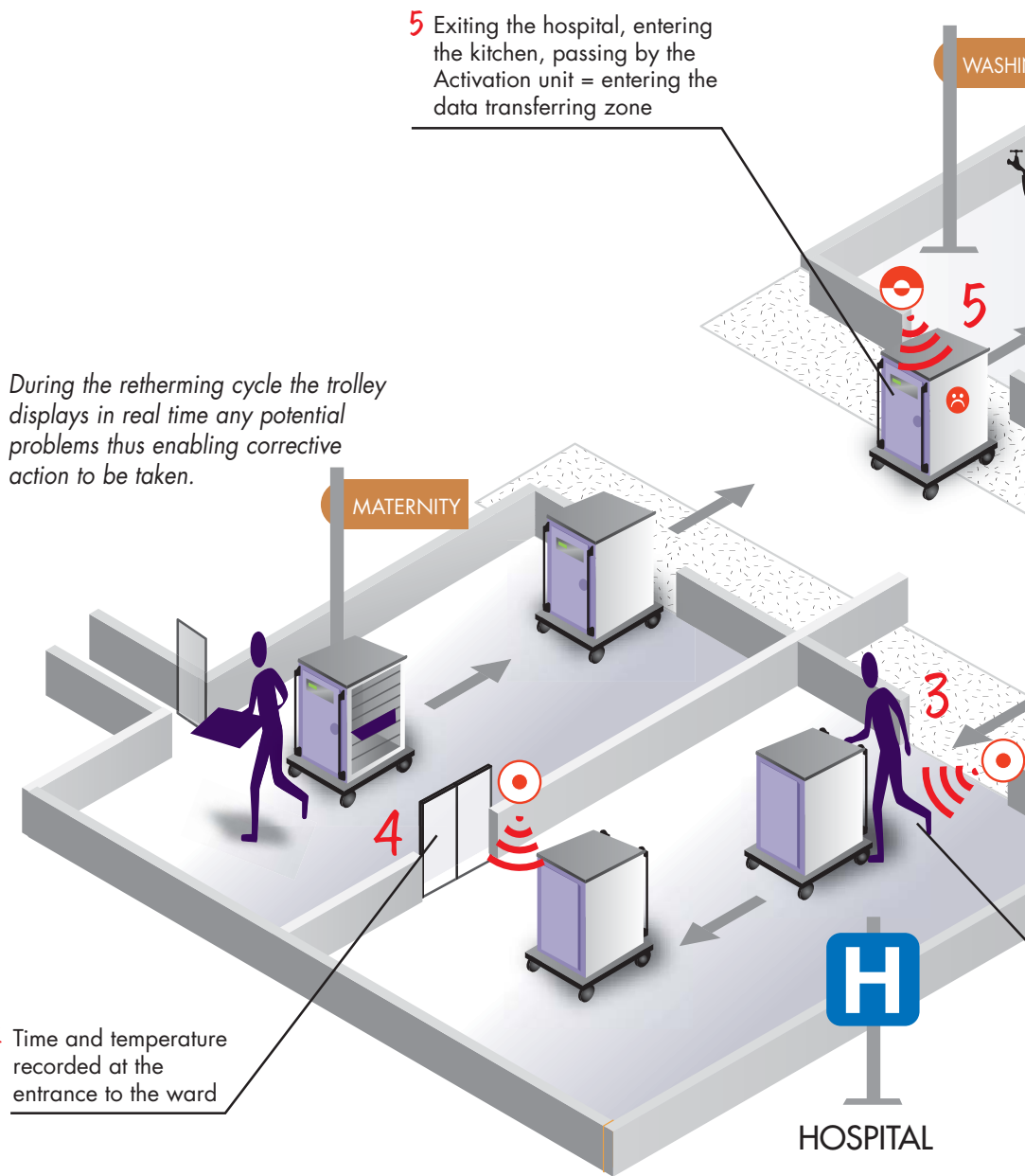


***ISECO, to enjoy nice and healthy food.***

*Therefore, the preservation of food quality as well as the pleasure and safety of your customers will always remain at the heart of our concerns.*



## ISECOM OPERATING PRINCIPLES



7 Data transfer is automatically performed during trolley operation negating the need for human intervention or trolley down time however many trolleys used

8 PC data monitoring and storing

6 Washing area

6 WASHING AREA

TECHNICAL SERVICES

MANAGER

STORAGE BEFORE PLATING

PLATING




STORAGE BEFORE DEPARTURE

CENTRAL KITCHEN

1 Plating and loading of the trays. Temperatures recording

2 Carbo loading (when relevant) check-point recording

3 Time and trolley cavity temperature recorded on arrival at the hospital

-  Check-point unit
-  Activation unit
-  Data transfer unit



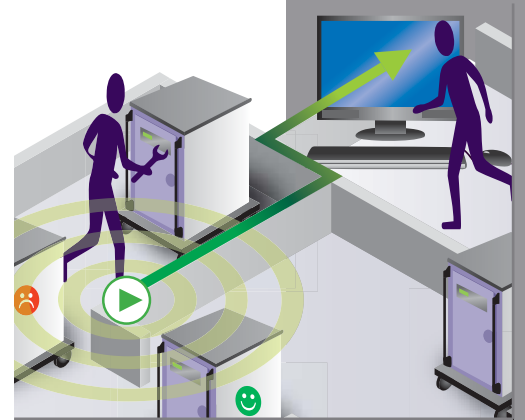
Unit

## Data transfer

Data is passed to a PC by radio transmission via the Data Transferring Unit. Radio communication and data transfer is automatic during trolley operation preventing trolley downtime.

Transmissions are secure : data is stored until a transfer has taken place.

The radio devices of ISECOM belong the SRDs class (Short Range Devices). Channel frequency : 868 MHz, transmission power : 25 mW (Apparent Power Radiated).



## ISECOM system components

- ISECOM data recording option

It includes a Radio Transfer Board and a "Battery Pack" powering the Radio Transfer Board when the trolley is not connected to the main power line.



- Check-point unit

One or more Check-point units are installed on the route of the trolleys enabling Geographical Traceability.

- Activation unit

This unit indicates to the trolley passing nearby that it is entering the data transferring zone and if critical events have occurred during the last 24 hours an alarm will be raised.

- Data Transferring unit

It receives data recorded by the trolleys and transfers it to a PC.

- CD ISECOM Software

This CD allows for the installation of ISECOM Acquisition and Visualisation applications.

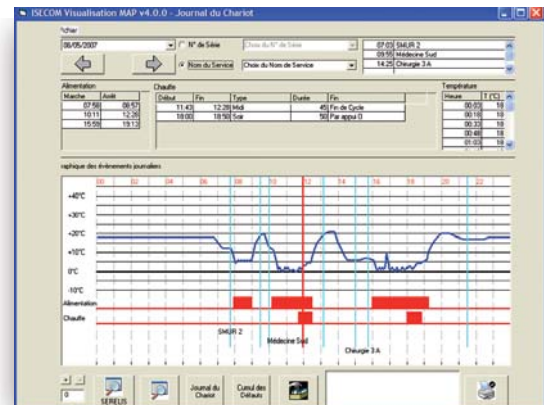


## Data monitoring

ISECOM Visualisation application allows for the monitoring of the data stored on the database.

Its main features are :

- sorting and selection by date serial no. or service name
- data display in table or chart format.



General report : daily events graph.

## Visualisation software

- The screens

- general report
- data graphs
- transfer and critical events report
- trolley report
- critical events list by trolley
- power cut-off report

Date	Événement	Date	Événement	Date	Événement
08/03/2005	+	07/03/2005	+	06/03/2005	+
0400004	+	0400001	+	0400002	+
0400002	+	0400005	+	0400006	+
0400005	+				

Transfer and critical events report.

Date	Nom du Service	Service	Date	Service
07 03	Nom du Service : SMUR 2			
07 45	Passage - Ouai Expédition			
07 58	Alimentation - Marche			
08 57	Alimentation - Arrêt			
09 30	Passage - Livraison			
09 35	Transfert HACCP			
09 55	Nom du Service : Médecine Sud			
10 01	Passage - Ouai Expédition			
10 11	Alimentation - Marche			
11 43	Début Chauffe - Midi			
11 58	Début 09 Plaque ou RegChaud 05 00 B			
12 28	Fin Chauffe - Fin de Cycle - Durée : 45 minutes			
12 28	Alimentation - Arrêt			
13 10	Passage - Livraison			
13 15	Transfert HACCP			
14 25	Nom du Service : Charge 3.A			
15 02	Passage - Ouai Expédition			
15 45	Passage - Couloir Chir 3			
15 59	Alimentation - Marche			
18 00	Début Chauffe - Soir			
18 50	Fin Chauffe - Per appui 0 - Durée : 50 minutes			
19 13	Alimentation - Arrêt			
21 30	Passage - Livraison			
21 35	Transfert HACCP			

The trolley's report allows you to quickly get a summary of the trolley's use over a given day.

Date	Time	Event	Time	Code
08/05/2007	11 58	09 Plaque ou RegChaud	06 00	B
02/05/2007	17 27	09 Plaque ou RegChaud	06 00	B
18/10/2004	18 01	09 Plaque ou RegChaud	02 00	A
12/10/2004	11 30	04 Réseau ou Pb Phase	48 00	0
24/05/2004	18 51	07 Identificateur	07 00	0

Critical events list by trolley allows the Technical Services to quickly get a report starting from the implementation of the trolley.



## They have placed their trust in us

EMS Val Fleuri GENEVE • Lincoln County  
Hospital LINCOLN • Hospital Universitario  
VALLODOLID • Lamia Hospital GRECE • Regina  
CANADA • Children's Hospital ATHENE  
Gregorio Maranon MADRID • Raigmore  
Hospital INVERNESS • St Barts Hospital  
LONDRES • Adullam Stiftung BASEL SUISSE  
Clinique Génolier SUISSE • Mater Hospital  
DUBLIN • Meier Hospital ISRAEL • Centre  
Hospitalier ROUBAIX • Centre Hospitalier  
Universitaire LILLE • Centre Hospitalier  
Universitaire ST ETIENNE • Centre Hospitalier  
ALES • Hôpital LANMEUR • Centre Hospitalier  
PARAY LE MONIAL • Centre Hospitalier  
ARMENTIERES • Centre Hospitalier BLOIS  
Centre Hospitalier Louis Mourrier COLOMBES  
Centre Hospitalier ROCHEFORT • Hôpital du Val  
de Grâce PARIS • Centre Hospitalier DOUAI  
Centre Hospitalier Princesse Grace MONACO  
Centre Hospitalier MAUBEUGE • Centre  
Hospitalier ST AMAND LES EAUX  
Kreikrankenhaus WALKIRCHEN • LBK  
HAMBURG • Mathilden Hospital BÜDINGEN  
Universitätsklinikum MAINZ • St, Josef Hospital  
LINNICH • Taunus Menü Service  
NEU-ANSPACH • St, Antonius Krankenhaus  
SCHLEIDEN • Universitätsklinikum ROSTOCK  
Westpfalzlinikum KAISERSLAUTERN • Karl-Olga  
Krankenhaus - STUTTGART • Krankenhaus  
WEGSCHEID • Universitätsklinikum-  
MAGDEBURG • Bathildis-Krankenhaus BAD  
PYRMONT • Sint Lucas Ziekenhuis BRUGGE  
Stichting Adhesie DEVENTER • Meander Centre  
Medical AMERSFOORT • OLV Hospital  
AMSTERDAM • University Medical Centre  
GRONINGEN • AZ Alma. Sijsele EEKLO • Isala  
Klinieken ZWOLLE • Centre Hospitalier Régional  
HUY • Delta ziekenhuis POORTUGAAL  
University Medical Centre UTRECHT • Albert  
Schweitzer Ziekenhuis DORDRECHT • Hôpital  
VILLIERS ST DENIS • Institut Gustave Roussy  
VILLEJUIF • Ziekenhuis Netwerk ANTWERPEN  
OCMW REKEM • Stichting Alleva ZEELAND  
Stichting Saffier DEN HAAG

and many others...

TRACKING SYSTEM

ISECOM



### ISECO International

2, avenue de Kaarst • Euralliance Porte A  
BP 52004 • 59777 EURAILLIE FRANCE  
Tél. : + 33 3 59 35 20 85 • Fax : +33 3 59 35 20 86

### ISECO SAS

63 route de Chamoy • 10130 SAINT-PHAL FRANCE  
Tél. +33 3 25 42 55 55 • Fax +33 3 25 42 19 59

Web site: [www.iseco.fr](http://www.iseco.fr) • E-mail : [contact@iseco.fr](mailto:contact@iseco.fr)